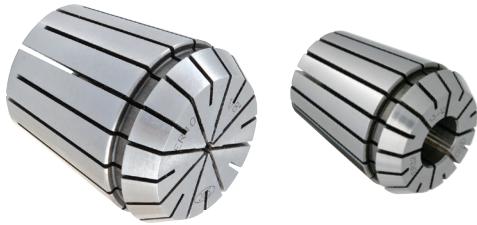


SAVE ON ER COLLETS



- Average 0.0002" T.I.R.
- Collapse range: 0.039"
- Available inch & metric



ER Collet Sets (inch)

Inch	Part No.	Range	Pcs.	Collets Included	Sale Price
ER11	04208IS	1/32-1/4"	7	1/16-1/4" by 32nds	\$90.00 EA
ER16	04209IS	1/16-3/8"	10	3/32-3/8" by 32nds	\$120.00 EA
ER20	04210IS	1/8-1/2"	12	5/32-1/2" by 32nds	\$165.00 EA
ER25	04211IS	1/8-5/8"	16	5/32-5/8" by 32nds	\$230.00 EA
ER32	04212IS	3/16-3/4"	18	7/32-3/4" by 32nds	\$260.00 EA
ER40	04213IS	1/8-1"	13	1/8-1.0" by 16ths	\$215.00 EA

ER Collet Sets (metric)

Metric	Part No.	Range	Pcs.	Collets Included	Sale Price
ER11	04201MS	0.5-7mm	13	1-7 by 0.5mm	\$165.00 EA
ER16	04202MS	0.5-10mm	10	1-10 by 1mm	\$120.00 EA
ER20	04203MS	1-13mm	12	2-13 by 1mm	\$165.00 EA
ER25	04204MS	1-16mm	15	2-16 by 1mm	\$225.00 EA
ER32	04205MS	2-20mm	18	3-20 by 1mm	\$260.00 EA
ER40	04206MS	3-26mm	23	4-26 by 1mm	\$395.00 EA

ER 11 Precision Collets - Sale: \$13.50 EA

Inch	Range	Shank	Metric	Range	Shank
04211-1/16	.043-.062"	1/16"	04211-01.0	.019-.039"	0.5-1.0
04211-3/32	.054-.093"	3/32"	04211-01.5	.039-.059"	1.0-1.5
04211-1/8	.086-.125"	1/8"	04211-02.0	.059-.079"	1.5-2.0
04211-5/32	.117-.156"	5/32"	04211-02.5	.079-.098"	2.0-2.5
04211-3/16	.148-.187"	3/16"	04211-03.0	.098-.118"	2.5-3.0
04211-7/32	.179-.218"	7/32"	04211-03.5	.118-.138"	3.0-3.5
04211-1/4	.211-.250"	1/4"	04211-04.0	.138-.157"	3.5-4.0
			04211-04.5	.157-.177"	4.0-4.5
			04211-05.0	.177-.197"	4.5-5.0
			04211-05.5	.197-.217"	5.0-5.5
			04211-06.0	.217-.236"	5.5-6.0
			04211-06.5	.236-.256"	6.0-6.5
			04211-07.0	.256-.276"	6.5-7.0

ER 16 Precision Collets - Sale: \$13.50 EA

Inch	Range	Shank	Metric	Range	Shank
04216-1/16	.043-.062"	1/16"	04216-01	.019-.039"	0.5-1
04216-3/32	.054-.093"	3/32"	04216-02	.039-.079"	1-2
04216-1/8	.086-.125"	1/8"	04216-03	.079-.118"	2-3
04216-5/32	.117-.156"	5/32"	04216-04	.118-.157"	3-4
04216-3/16	.148-.187"	3/16"	04216-05	.157-.197"	4-5
04216-7/32	.179-.218"	7/32"	04216-06	.197-.236"	5-6
04216-1/4	.211-.250"	1/4"	04216-07	.236-.276"	6-7
04216-9/32	.242-.281"	9/32"	04216-08	.276-.315"	7-8
04216-5/16	.273-.312"	5/16"	04216-09	.315-.354"	8-9
04216-11/32	.304-.343"	11/32"	04216-10	.354-.394"	9-10
04216-3/8	.336-.375"	3/8"			
04216-13/32	.367-.406"	13/32"			

ER 20 Precision Collets - Sale: \$15.00 EA

Inch	Range	Shank	Metric	Range	Shank
04220-3/32	.054-.093"	3/32"	04220-02	.039-.079"	1-2
04220-1/8	.086-.125"	1/8"	04220-03	.079-.118"	2-3
04220-5/32	.117-.156"	5/32"	04220-04	.118-.157"	3-4
04220-3/16	.148-.187"	3/16"	04220-05	.157-.197"	4-5
04220-7/32	.179-.218"	7/32"	04220-06	.197-.236"	5-6
04220-1/4	.211-.250"	1/4"	04220-07	.236-.276"	6-7
04220-9/32	.242-.281"	9/32"	04220-08	.276-.315"	7-8
04220-5/16	.273-.312"	5/16"	04220-09	.315-.354"	8-9
04220-11/32	.304-.343"	11/32"	04220-10	.354-.394"	9-10
04220-3/8	.336-.375"	3/8"	04220-11	.394-.433"	10-11
04220-13/32	.367-.406"	13/32"	04220-12	.433-.472"	11-12
04220-7/16	.398-.437"	7/16"	04220-13	.472-.512"	12-13
04220-15/32	.429-.468"	15/32"			
04220-1/2	.461-.500"	1/2"			

ER 25 Precision Collets - Sale: \$16.00 EA

Inch	Range	Shank	Metric	Range	Shank
04225-3/32	.054-.093"	3/32"	04225-02	.039-.079"	1-2
04225-1/8	.086-.125"	1/8"	04225-03	.079-.118"	2-3
04225-5/32	.117-.156"	5/32"	04225-04	.118-.157"	3-4
04225-3/16	.148-.187"	3/16"	04225-05	.157-.197"	4-5
04225-7/32	.179-.218"	7/32"	04225-06	.197-.236"	5-6
04225-1/4	.211-.250"	1/4"	04225-07	.236-.276"	6-7
04225-9/32	.242-.281"	9/32"	04225-08	.276-.315"	7-8
04225-5/16	.273-.312"	5/16"	04225-09	.315-.354"	8-9
04225-11/32	.304-.343"	11/32"	04225-10	.354-.394"	9-10
04225-3/8	.336-.375"	3/8"	04225-11	.394-.433"	10-11
04225-13/32	.367-.406"	13/32"	04225-12	.433-.472"	11-12
04225-7/16	.398-.437"	7/16"	04225-13	.472-.512"	12-13
04225-15/32	.429-.468"	15/32"	04225-14	.512-.551"	13-14
04225-1/2	.461-.500"	1/2"	04225-15	.551-.591"	14-15
04225-17/32	.492-.531"	17/32"	04225-16	.591-.630"	15-16
04225-9/16	.523-.562"	9/16"			
04225-19/32	.554-.593"	19/32"			
04225-5/8	.586-.625"	5/8"			

ER 32 Precision Collets - Sale: \$16.00 EA

Inch	Range	Shank	Metric	Range	Shank
04232-3/32	.054-.093"	3/32"	04232-03	.079-.118"	2-3
04232-1/8	.086-.125"	1/8"	04232-04	.118-.157"	3-4
04232-5/32	.117-.156"	5/32"	04232-05	.157-.197"	4-5
04232-3/16	.148-.187"	3/16"	04232-06	.197-.236"	5-6
04232-7/32	.179-.218"	7/32"	04232-07	.236-.276"	6-7
04232-1/4	.211-.250"	1/4"	04232-08	.276-.315"	7-8
04232-9/32	.242-.281"	9/32"	04232-09	.315-.354"	8-9
04232-5/16	.273-.312"	5/16"	04232-10	.354-.394"	9-10
04232-11/32	.304-.343"	11/32"	04232-11	.394-.433"	10-11
04232-3/8	.336-.375"	3/8"	04232-12	.433-.472"	11-12
04232-13/32	.367-.406"	13/32"	04232-13	.472-.512"	12-13
04232-7/16	.398-.437"	7/16"	04232-14	.512-.551"	13-14
04232-15/32	.429-.468"	15/32"	04232-15	.551-.591"	14-15
04232-1/2	.461-.500"	1/2"	04232-16	.591-.630"	15-16
04232-17/32	.492-.531"	17/32"	04232-17	.630-.669"	16-17
04232-9/16	.523-.562"	9/16"	04232-18	.669-.709"	17-18
04232-19/32	.554-.593"	19/32"	04232-19	.709-.748"	18-19
04232-5/8	.586-.625"	5/8"	04232-20	.748-.787"	19-20
04232-21/32	.617-.656"	21/32"			
04232-11/16	.648-.687"	11/16"			
04232-23/32	.679-.718"	23/32"			
04232-3/4	.711-.750"	3/4"			

ER 40 Precision Collets - Sale: \$18.00 EA

Inch	Range	Shank	Metric	Range	Shank
04240-1/8	.086-.125"	1/8"	04240-04	.118-.157"	3-4
04240-5/32	.117-.156"	5/32"	04240-05	.157-.197"	4-5
04240-3/16	.148-.187"	3/16"	04240-06	.197-.236"	5-6
04240-7/32	.179-.218"	7/32"	04240-07	.236-.276"	6-7
04240-1/4	.211-.250"	1/4"	04240-08	.276-.315"	7-8
04240-9/32	.242-.281"	9/32"	04240-09	.315-.354"	8-9
04240-5/16	.273-.312"	5/16"	04240-10	.354-.394"	9-10
04240-11/32	.304-.343"	11/32"	04240-11	.394-.433"	10-11
04240-3/8	.336-.375"	3/8"	04240-12	.433-.472"	11-12
04240-13/32	.367-.406"	13/32"	04240-13	.472-.512"	12-13
04240-7/16	.398-.437"	7/16"	04240-14	.512-.551"	13-14
04240-15/32	.429-.468"	15/32"	04240-15	.551-.591"	14-15
04240-1/2	.461-.500"	1/2"	04240-16	.591-.630"	15-16
04240-17/32	.492-.531"	17/32"	04240-17	.630-.669"	16-17
04240-9/16	.523-.562"	9/16"	04240-18	.669-.709"	17-18
04240-19/32	.554-.593"	19/32"	04240-19	.709-.748"	18-19
04240-5/8	.586-.625"	5/8"	04240-20	.748-.787"	19-20
04240-21/32	.617-.656"	21/32"	04240-21	.787-.827"	20-21
04240-11/16	.648-.687"	11/16"	04240-22	.827-.866"	21-22
04240-23/32	.679-.718"	23/32"	04240-23	.866-.906"	22-23
04240-3/4	.711-.750"	3/4"	04240-24	.906-.945"	23-24
04240-7/8	.836-.875"	7/8"	04240-25	.945-.984"	24-25
04240-1	.961-1.00"	1"	04240-26	.984-1.024"	25-26